



Hyde Group

www.hydegroupp.com

THANK YOU TO ALL OUR CUSTOMERS

- ▶ Privately owned company
- ▶ Hyde Industrial Holdings Limited - (H.I.H.)
- ▶ Annual turnover \$160 m - (£107 m)
- ▶ (H.I.H) divest day to day management of group to Hyde Group Limited
- ▶ Hyde Group Limited divided into three operating disciplines
- ▶ Tooling Division
- ▶ Aero products Division
- ▶ Commercial Division

- ▶ 1,350 employees directly engaged throughout the group
- ▶ Total group floor space 810,000sq ft - (76,000sq mtrs)

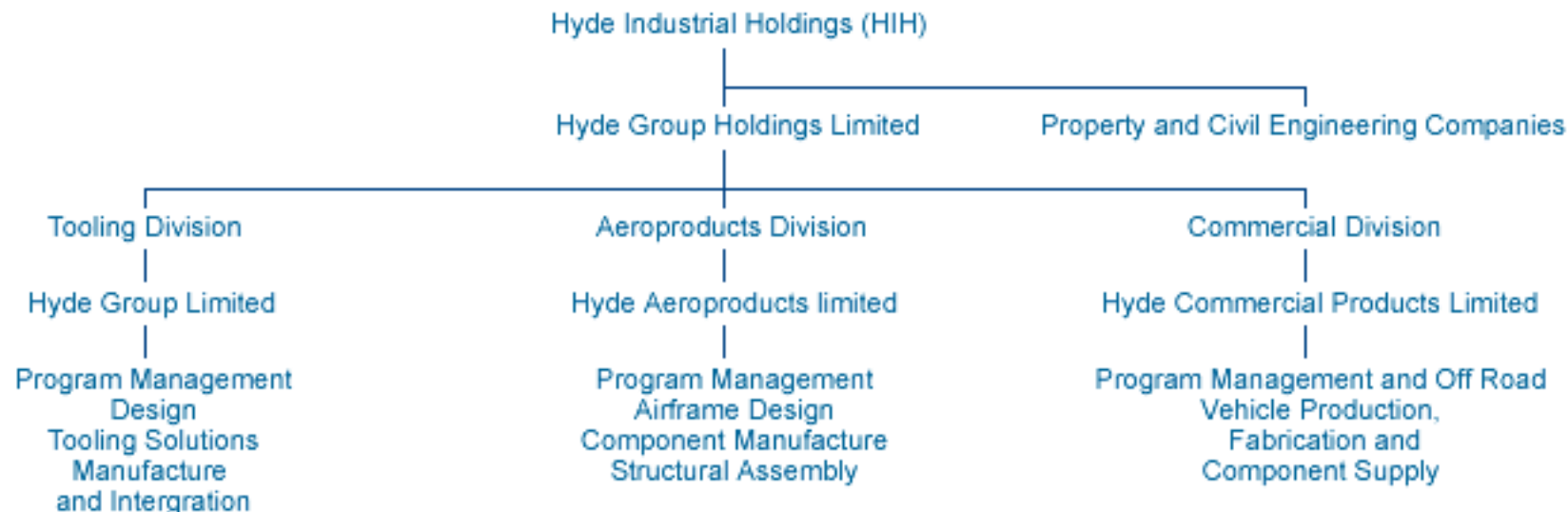
The worlds largest tool design and manufacturing resource



Hyde Group

www.hydegroupp.com

Corporate structure



The worlds largest **tool design** and **manufacturing resource**



Hyde Group

www.hydegroupp.com

Quality

**CIVIL AVIATION
AUTHORITY**

LOCKHEED MARTIN

BOMBARDIER

KAI

**SAAB
TECHNOLOGIES**

BOEING

S.A.B.C.A.

CATERPILLAR®

BAE SYSTEMS

AIRBUS

**NQA
ISO 9002
REGISTERED COMPANY**

**NATIONAL
ACCREDITATION
OF CERTIFICATION
BODIES**

**British Quality
Foundation**
PROMOTING TOTAL QUALITY IN THE UK

The worlds largest tool design and manufacturing resource



Hyde Group

www.hydegroupp.com

Finance



Hyde remain a privately owned company, which is financially strong with extremely low gearing

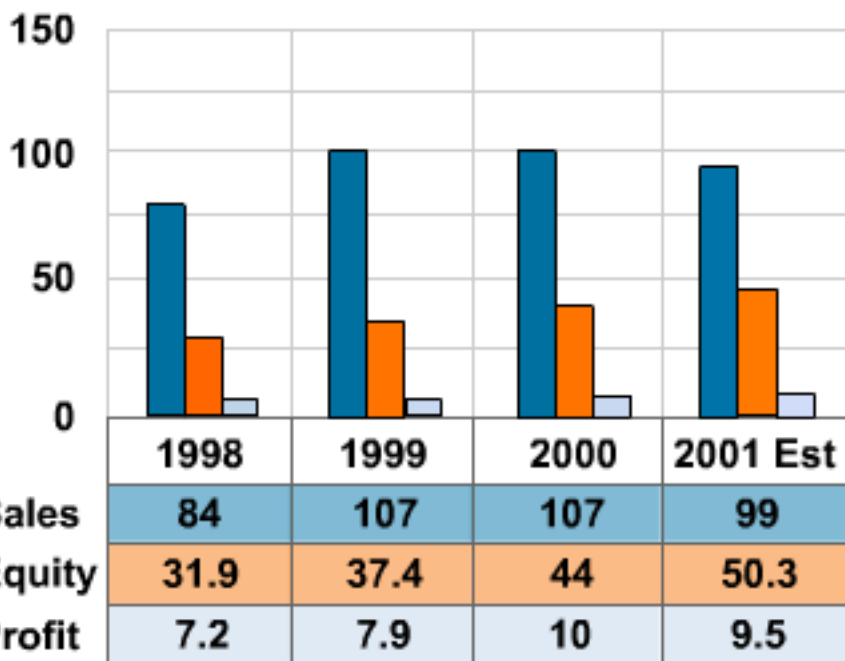
Average financial measures over a five year period 1997 to 2001 can be seen on a graph by clicking [here](#)

- ▶ Turnover / Sales £92 million
- ▶ Export 7.1%
- ▶ Pre tax profit 8.7%
- ▶ Capital expenditure £7.6 million
- ▶ Average employee level 1,200
- ▶ Current net worth / equity £50 million

The worlds largest tool design and manufacturing resource

Show Graph in \$'s

£'s Millions



Show Graph in £'s

\$'s Millions

